

Energy Savings Tips

Simple, energy conservation techniques that can save you money.

REFRIGERATORS

1. Check your refrigerator/freezer's door seal by closing the door on a \$5 dollar bill. If it's held tightly in place, the seal's okay, if not, the door should be adjusted or the seal replaced.
2. Clean the refrigerators back coils (if accessible) and the air intake grill (below the doors) every 3 months. Remember to unplug before cleaning.
3. Ideal fridge temperature is 1 to 4°C, ideal freezer temp is -15 to -18°C

If you have a fridge that is 15 years or older it is probably costing you over \$150 a year in electricity costs. Make an appointment with The Great Refrigerator Roundup and we'll come to your home and take it away for **FREE!*** Please visit www.everykilwattcounts.ca/roundup.ca or call **1-877-797-9473** for more information or to book an appointment.



SPACE HEATING AND COOLING

1. Install a programmable thermostat to manage the amount of energy used to heat and cool your home.
2. Caulk, seal and weather-strip windows to keep heat in during the winter and cool in during the summer.

Save money and help the environment by signing up for PowerStream's **peaksaver**® program! We'll install your **FREE!** touch screen programmable thermostat at no charge and you can manage your thermostat temperature online!



Visit www.powerstream.ca/peaksaver or phone **1-866-323-0206** for more information or to sign-up.

COOKING

1. Use a microwave or toaster oven instead of the oven to heat up toast or cook small amounts of food.
2. Thaw frozen foods in the refrigerator.
3. Use an electric automatic shut-off kettle to boil water.

*Subject to terms and conditions of the program

® Registered trademark of Toronto Hydro Corporation. Used under licence. A program offered by the Ontario Power Authority and PowerStream Inc. ™ Official mark of the Ontario Power Authority. †Including the cost of installation. Offer valid subject to technical qualifications and while quantities last. Touch screen thermostat upgrade only available on first time installations for new participants.

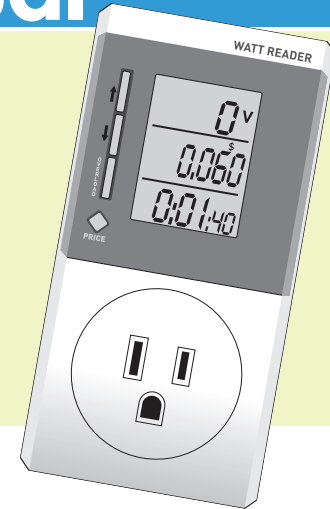


www.powerstream.ca/conservation

Watt Reader Device Manual

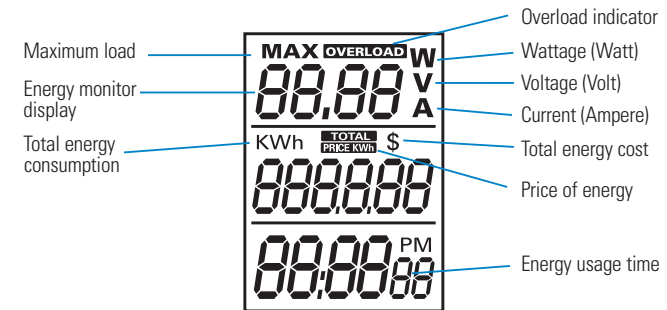
Interested in identifying the operating cost of electrical devices in your home? The Watt Reader is designed to help you collect the information you need. Follow these instructions and discover the amount of electricity used by plug-in appliances throughout the home.

For conservation tips and information on this as well as other programs, please visit www.powerstream.ca/conservation



Getting Started

DISPLAY



BUTTON PLACEMENT

- 1 — scrolls through line voltage, line current, max current, wattage, max wattage and overload warning mode
- 2 — scrolls through total energy, total cost, and energy price mode
- 3 **OVERLOAD** — overload set
- 4 **PRICE** — price set



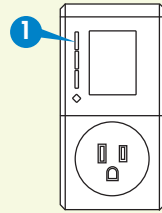
www.powerstream.ca/conservation

OM Official marks of the Ontario Power Authority.

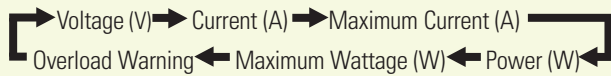
Energy Monitor

TOP PORTION OF LCD DISPLAY

- Press **↑** to view the line voltage, line current, max current, wattage and max wattage readings; displayed in the top portion of the LCD.
 - > Line Voltage – voltage (V)
 - > Line Current – current (A)
 - > Max Current – max current (A)
 - > Wattage – real power (W)
 - power = voltage x current x power factor
 - > Max Wattage – maximum wattage (W)

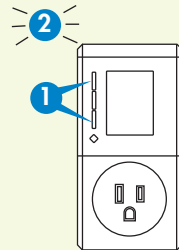


- * Modes are arranged in a circular pattern: (top portion of the LCD)



TO CLEAR MAX LOAD

- Press and hold **↑** and **OVERLOAD** together for 3 seconds to clear max current and max wattage readings
- Beep indicates that max current and max wattage readings are cleared



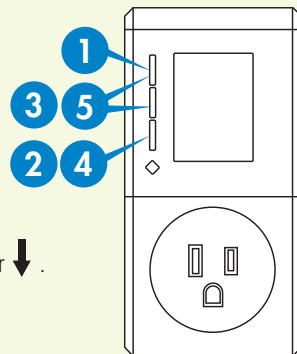
Overload Warning

TOP PORTION OF LCD DISPLAY

The overload warning function allows you to safeguard against exceeding a preset load capacity. The 'overload' indicator will flash and the alarm will sound continuously to warn you in the case of an overload.

SETTING THE OVERLOAD PARAMETER

- Select overload warning mode using **↑**
- Press **OVERLOAD**
- Toggle between overload in wattage (W) or current (A) using **↑** or **↓**
- Press **OVERLOAD**
- Adjust the desired parameter value using **↑** or **↓**. Press **OVERLOAD** to set each digit.



- * **ATTENTION:**
This energy meter is NOT a surge protector

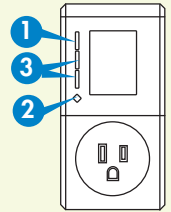
Energy Consumption and Cost

MIDDLE PORTION OF LCD DISPLAY

The price setting function allows you to input the electrical rate in \$/kWh to calculate the total cost of energy consumption.

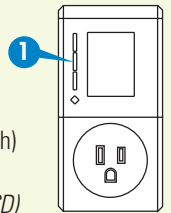
SETTING THE PRICE OF ENERGY

- Select energy price mode using **↓**
- Press **PRICE**
- Adjust the value using **↑** or **↓**. Press **PRICE** (0.10 kWh) to set each digit.



TOTAL ENERGY USED AND TOTAL COST

- Press **↓** to view total energy used and total cost incurred
 - > Total Energy – Total accumulated energy used by the load (kWh)
 - > Total Cost – Total accumulated energy cost incurred by the load (\$) based on the user-set price (\$/kWh) and total energy (kWh)



- * Modes are arranged in a circular pattern: (middle portion of the LCD)



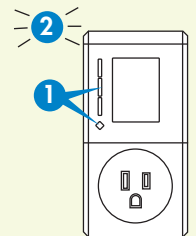
Energy Usage Time

BOTTOM PORTION OF LCD DISPLAY

The bottom portion of the LCD display keeps track of the accumulated energy usage time – "power on" time.

TO CLEAR ENERGY USAGE TIME/TOTAL ENERGY USED

- Press and hold **↓** and **PRICE** together for 3 seconds to clear energy usage time and total energy used (kWh)
- Beep indicates that energy usage time and total energy used are cleared



General Notes:

- This meter is intended for indoor use only.
- Energy charge input for PowerStream Inc. customers is \$0.10 kWh
- This meter should be left on a cycling load for a minimum 24 hrs. (eg. Fridge)
- Please use caution and proper safety procedures when using this device.

Technical Specifications

Ratings: 120V AC, 15A
Max Load: 1800W

If you have any questions regarding this process please call:

Vaughan & vicinity
905-417-6900

All other areas
1-877-963-6900